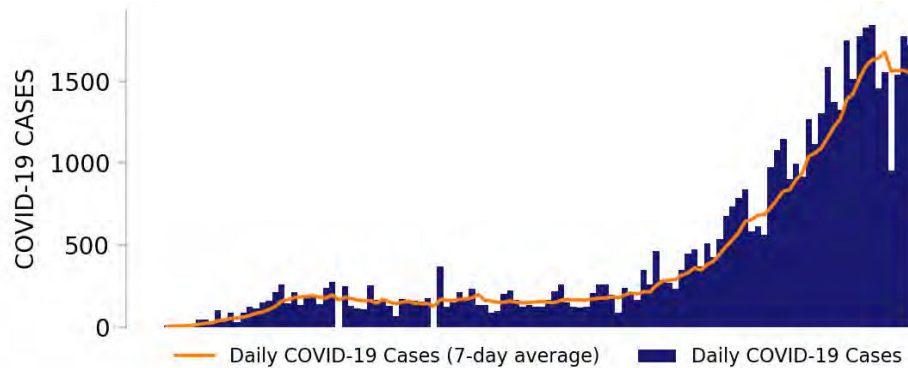




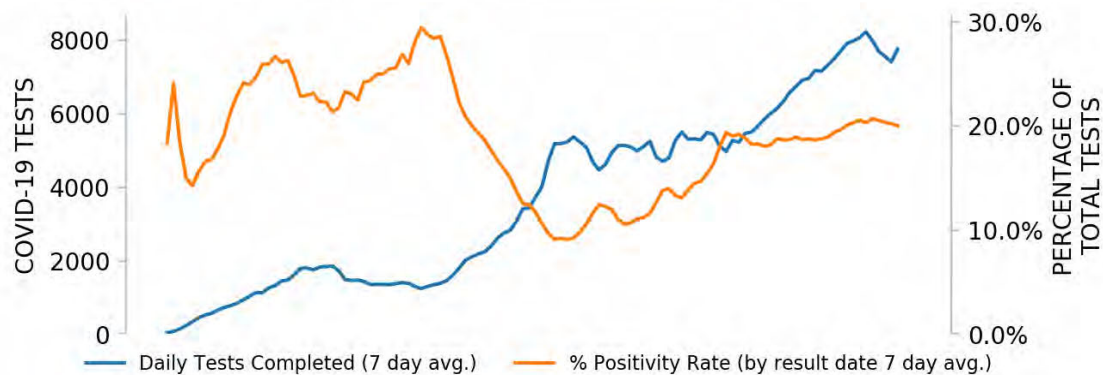
SOUTH CAROLINA

STATE REPORT | 07.14.2020

NEW CASES

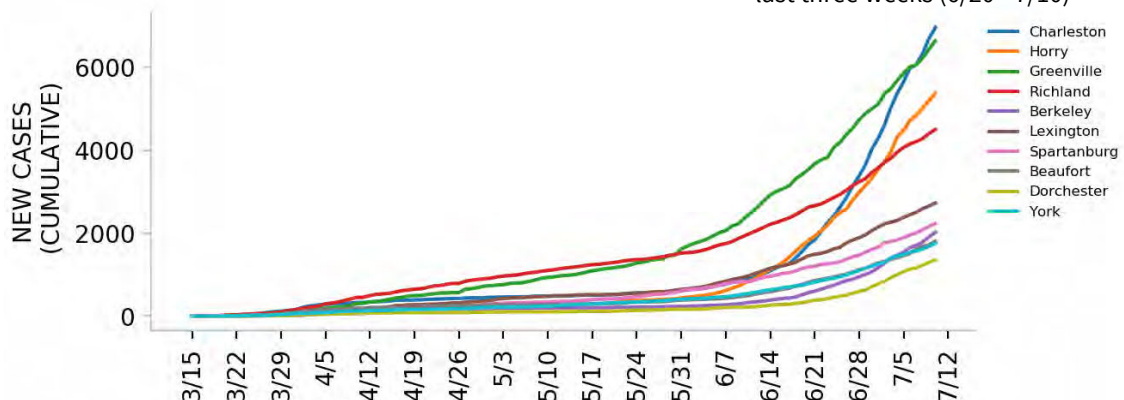


TESTING



Top counties based on greatest number of new cases in last three weeks (6/20 - 7/10)

TOP COUNTIES



DATA SOURCES

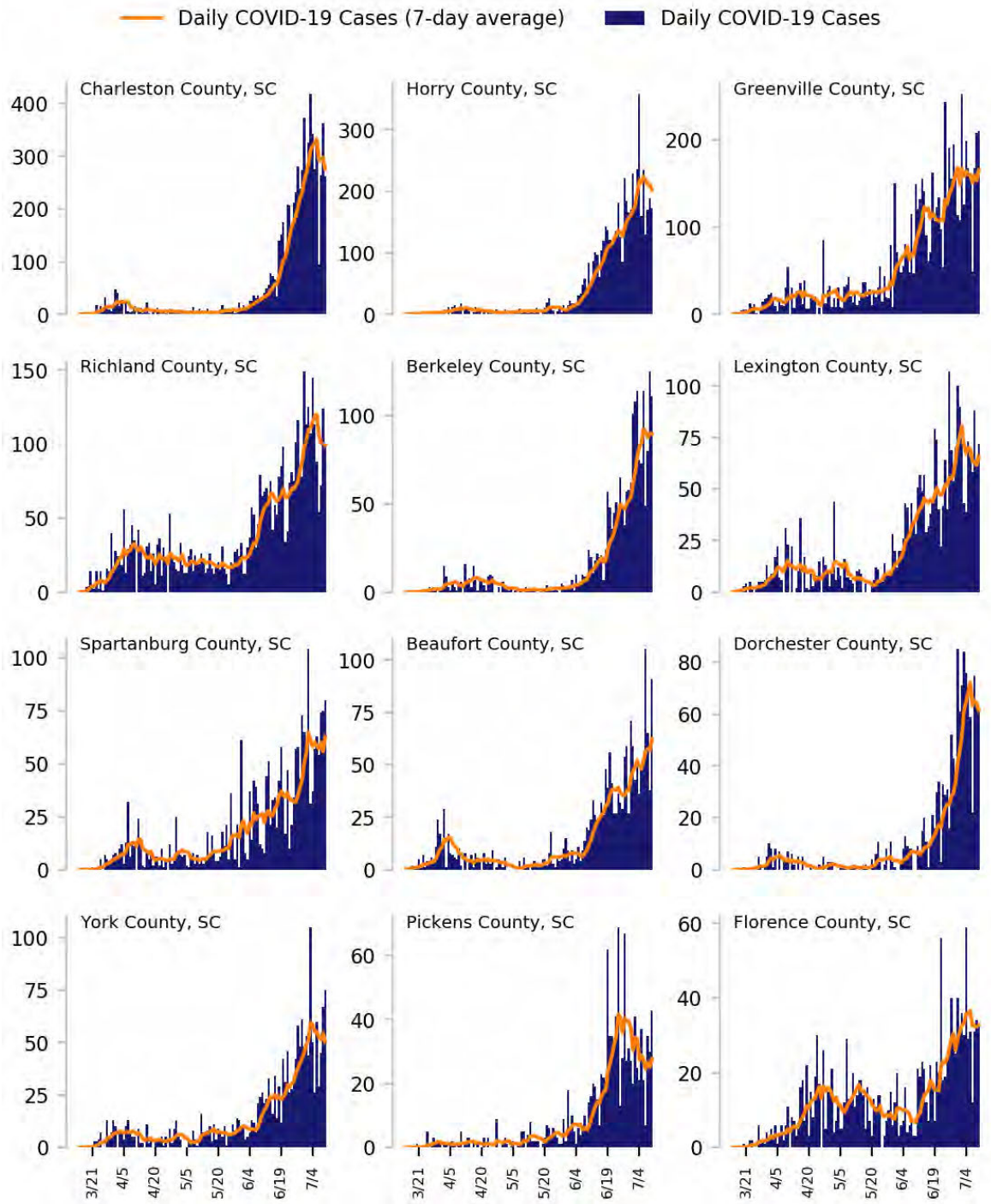
Cases: County-level data from USAFacts. State values are calculated by aggregating county-level data from USAFacts; therefore, the values may not match those reported directly by the state. Data is through 7/10/2020.

Testing: CELR (COVID-19 Electronic Lab Reporting) state health department-reported data through 7/8/2020.



Top 12 counties based on number of new cases in the last 3 weeks

TOTAL DAILY CASES



DATA SOURCES

Cases: County-level data from USAFacts through 7/10/2020. Last 3 weeks is 6/20 - 7/10.

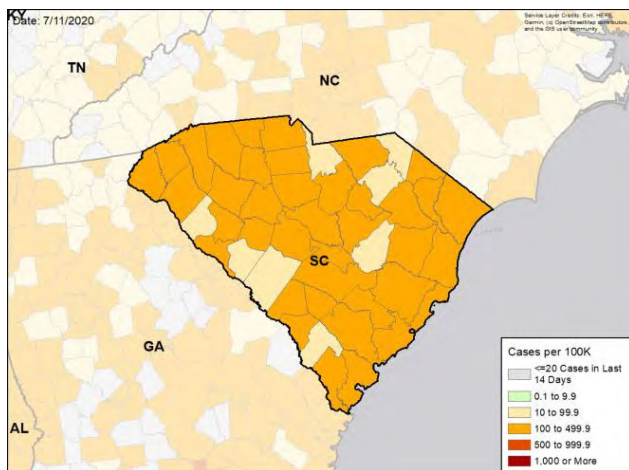


SOUTH CAROLINA

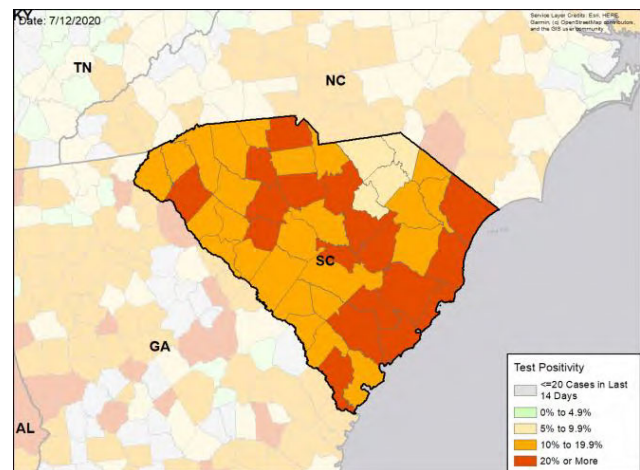
STATE REPORT | 07.14.2020

CASE RATES AND DIAGNOSTIC TEST POSITIVITY DURING THE LAST WEEK

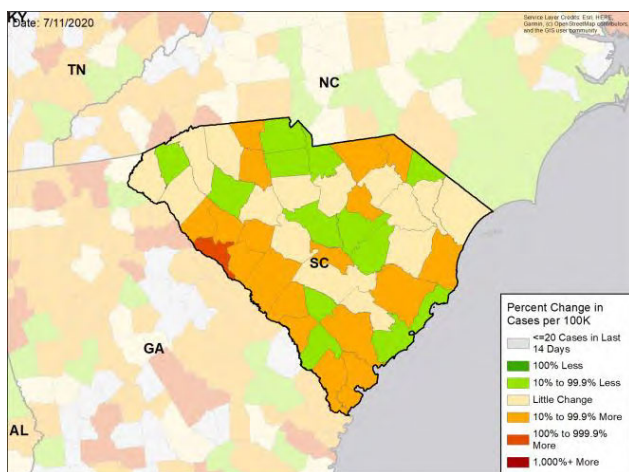
NEW CASES PER 100,000 DURING LAST WEEK



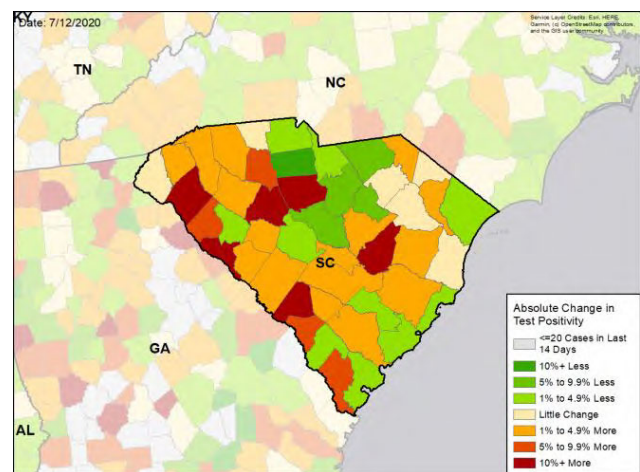
TEST POSITIVITY DURING LAST WEEK



WEEKLY % CHANGE IN NEW CASES PER 100K



WEEKLY CHANGE IN TEST POSITIVITY



DATA SOURCES

Cases: County-level data from USAFacts through 7/10/2020. Last week is 7/4 - 7/10, previous week is 6/27 - 7/3

Testing: CELR (COVID-19 Electronic Lab Reporting) state health department-reported data through 7/8/2020. Last week is 7/2 - 7/8, previous week is 6/25 - 7/1.